

1. All for One

Mod. Beat ♩ = 128

Leslie Searle

1 Gm | A⁷ E^bm⁶ Gm | Dm | E⁷ A⁷ D⁷ |

6 D⁷ | Gm | Gm C⁷ | Gm Gm⁷ | A⁷ Cm⁶ D⁷ |

11 Gm | Gm D⁷ Gm | A⁷ E^b7 | E^b7 | D^b7 |

16 D^b7 | Fm | D^o | C⁷ C⁷ | D⁷ D⁷ |

D.C. al^o-^o Coda

Coda 21 Gm |

2. Taste of Jazz

Mod. slow Swing ♩ = 112

Leslie Searle

1 F E⁷ E⁷ | Cm⁷ D⁷ | G⁷ C⁷ C⁺ | F C⁷ C⁷ | F E⁷ E⁷ | Cm⁷ D⁷ |

[A]

7 G⁷ G⁶ | C F⁷ | B^b7 |

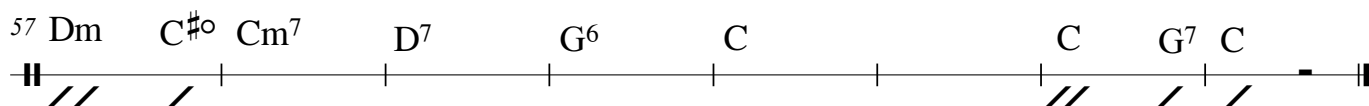
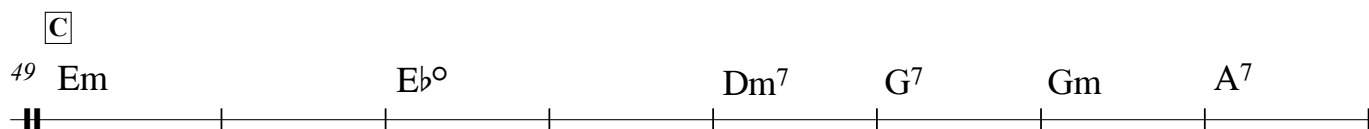
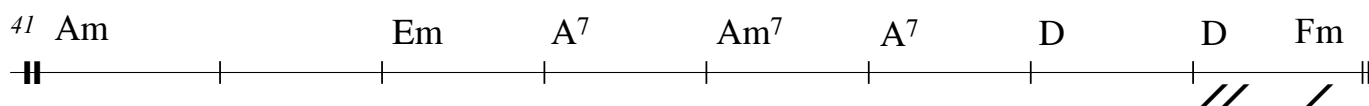
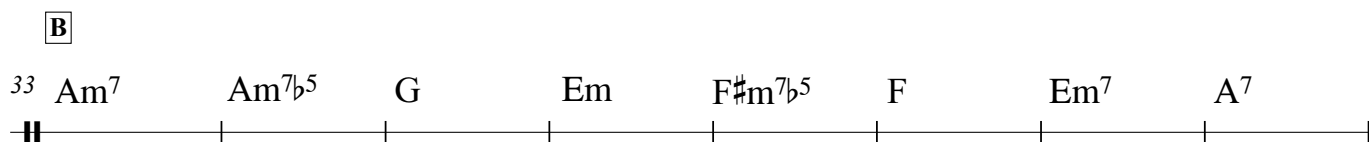
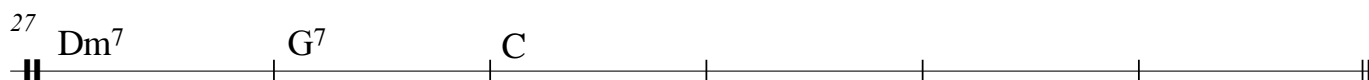
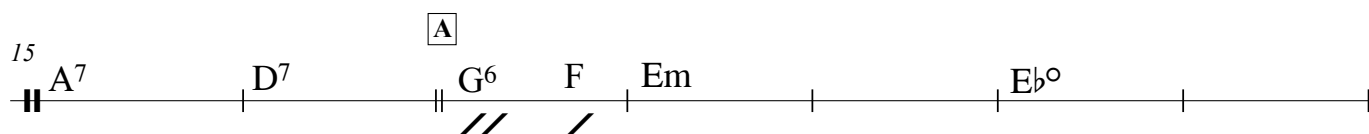
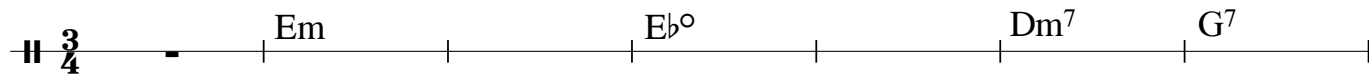
[B]

13 F E^{#7} E^{#7} | Cm⁷ D⁷ | 1. G⁷ C⁷ C⁶ | F Gm⁷ E | 2. G⁷ C⁷ C⁺ | F |

3. Donau and Inn

Moderato ♩ = 180

Leslie Searle



4. Everything I Have

Leslie Searle

Slowly ♩ = 88

3/4 Am B Am B⁴ B G^{#o} Am D⁷ G⁷ C

7 G B^b° Am⁷ D⁷ **A** Am B Am B⁴ B G^{#o}

13 Am D⁷ G⁷ G⁷ C B⁺ B⁷ E⁴ E D⁷ **B** G D⁷

19 G C^{#m}⁷ F^{#7} B Abm⁷ A⁷ A⁷ F^{#4} F[#]

D.C. al ϕ - ϕ Coda

ϕ Coda 25 E G^{#o} Am D⁷ G⁷ G⁷ C B⁺ B⁷ E⁴ E

5. Junior Polka

Leslie Searle

Allegretto ♩ = 96

1. Eb B^{b7} Eb⁷ Ab Eb B^{b7} Cm F⁷ B^b

9 2. Eb B^b Eb D^b Ab⁷ F F⁷

Fine

14 B^bm B^b B^{b7} Ebm C⁷ F⁷ F⁷ B^{b7}

D.C. con Rep. al Fine

6. Olympic Sprint

Leslie Searle

Presto ♩ = 132

2/4 F Dm D⁷ Gm C⁷ F

5 F Dm E⁷ Am C⁷

9 F⁷ B^{b4} B^b D⁷ D⁷ Gm Eb⁷ Ab⁴ Ab C⁷ C⁷

13 F F⁷ B^b D⁷ D⁷ Gm⁷ C⁷ 1. F C⁷ G⁷ C⁷ 2. F

7. Regalia

Allegretto $\text{♩} = 120$

Leslie Searle

Staff 1: $B\flat$ | F | $B\flat$ | $E\flat B\flat$ | F | Gm | C^7
 Staff 2: 7 F | F^7 | $B\flat$ | F | Gm | D^7 | Gm
 Staff 3: 14 C^7 | F | F^7 | A $B\flat$ | $B\flat^7$ | $E\flat$ | C | C^7
 Staff 4: 20 F | D | D^7 | Gm | C^7 | F | B $B\flat$ | F
 Staff 5: 27 $B\flat$ | $E\flat B\flat$ | F | $B\flat$ | $B\flat^7$ | $E\flat$ | $B\flat$ | F | F^7 | $B\flat$

8. Slow Boat

Slow Beat $\text{♩} = 92$

Leslie Searle

Staff 1: $\text{♩} \text{ } 7$ Fm^7 | $B\flat^7$ | $E\flat$ | Cm
 Staff 2: 4 F^7 | $B\flat^7$ | $E\flat$ | C^7 | F^7
 Staff 3: 8 Fm^7 | $B\flat^7$ | $E\flat$ | Cm | F^7
 Staff 4: 12 $Am^7\flat^5$ | D^7 | Gm | C^7 | Cm^7 | $E\flat$ | F^7 | $B\flat$

9. Sad Story, Happy End

Leslie Searle

Andante ♩ = 132

1. Cm G⁷ Cm Fm A^bm⁶ B^b7⁴ B^b7 Fm B^b7 Eb B^b B^bm⁶ F⁷⁴ F⁷ D⁷ Dm⁷ G⁷ ::||

2. C⁴ C Gm⁷ C Fm E+ Fm⁷ D Gm G^b+ B^b C⁷ Gm⁷ C⁷ F⁷ B^b7

15 Fm⁷ B^b7 Fm⁷ Fm⁶ G⁷ Cm G⁷ Cm F⁷ Eb⁷ A^b

22 Eb⁷ A^b B^b⁴ B^b7 Eb Eb⁷ Eb^o A^bm Eb

10. Riding High

Presto ♩ = 148

Leslie Searle

B^b F⁷

9 B^b

17 B^b7 Eb

24 E^o B^b G⁷ C⁷ F⁷ B^b Fine

32 B^b6 B^o Cm F⁷⁴ F⁷ F⁷⁴ F⁷

40 B^b6 B^b B^b B^b^o G⁷ G⁷ G⁷^b9 1. Cm F⁷ ::||

48 2. Eb Ebm B^b/D

54 D^b^o Cm F⁷ F⁷ F⁷^{#5}^b9 D.C. al Fine

11. Sea Changes

Moderato ♩ = 116

Leslie Searle

2/4 Bb Bb^Δ Bb^6
 6 Bbm F F° Cm^7 F^7 Dm^7
 12 Gm^7 C^{74} C^7 Cm^7 F^7 F^6 :||
 17 D° Cm F^7 F^7 Bb
 22 **A** Eb Eb° Bb Bbm Ab Abm Eb Bb° F F°
 27 Cm F^7 Fm^7 Bb° Bb^7 Eb^7
 33 Ab Eb° Eb Eb° Gm^7 C^7
 40 F^9 Bb^7 Eb F^7 **B** Bb Bb^Δ
 45 Bb^6 Bbm F F° Cm^7 F^7
 52 Bb Bb^Δ Fm^6 $\text{G}^{7\#5}$ C^7 Cm F^6 Bb

12. Skates in the States

Ragtime ♩ = 116

Leslie Searle

C F F° F F° D^7 G^7 C^7 C° C^7 C°
 6 C^7 F^Δ Gb° F F^7 Bb B° F F^Δ
 12 D^7 G^7 C Dm^7 Eb° C^7 :||
 17 D^9 G^7 Gm^7 C^7b^9 F Ab° Gm^7 F

13. Trio Grande

Leslie Searle

Tango ♩ = 108

♩ -

7

13

19

25

Coda

D.S. al Coda

Chords: Fm⁷, B^{b7}, Gm⁷, Cm⁷, Cm⁶, C^o, D⁷, G⁴, G, D⁷, G⁷, C⁷, F⁷, B^{b7}, Gm, Cm⁷, Cm, Cm⁶, D⁷, D⁷, G^{add9}, G, G^Δ, G⁷, C⁶⁹, C⁹, Cm, F⁹, B^{bΔ9}, B^b, Fm, B^{b9}, B⁹, C⁶⁹, C⁹, Cm, A⁷, Dm⁷, G⁷, C⁹, F¹³, B^{b9}, E^{b7}, Cm⁷, Fm⁷, B^{b7}, E^b, A^b, E^b

14. Tuesday Evening

Leslie Searle

Beat-Beguine ♩ = 96

♩ -

6

11

16

Chords: B^b, Cm⁷, F⁷, Cm⁷, F⁷, B^{b6}, B^b, Gm, C⁷, Am, Dm, Gm⁷, C⁷, Cm, F⁷, B^b, Cm⁷, F⁷, Cm⁷, F⁷, B^b, Fm⁷, B^{b7}, E^b, E^bm⁶, B^b, Cm⁷, F⁷, B^b, B^b, C^o, D^o, E^o, Fm⁷, B^{b7}, E^b, E^bm⁶, B^b, Cm⁷, F⁷, B^b, B^b

15. Bow Out

Leslie Searle

Slow Beat ♩ = 96

♩ -

6

11

15

Chords: G⁶, Am, E⁺, C/G, G^b^o, Dm, Dm⁷, G⁷, C, Dm⁷, G⁷, F⁶, G⁷, Em, Am, A^b, Fm⁶, A^{b7}, Dm/G, G⁶, Am, E⁺, C/G, G^b^o, Dm, Dm⁷, G⁷, Gm⁷, C⁷, F, Fm, C, Cm, C^o, Dm, Dm⁷, G⁷, C, A^b, C